

SENSALARM®

- Plug-in Intelligent Sensors
- Integral Horn and Strobe
- NEMA 4X, UL Listed Enclosure
- Magnetic Non-intrusive Interface
- Local or Remote Sensor
- 4-20 mA and Modbus (RS-485) Outputs
- 115/230 VAC Operation

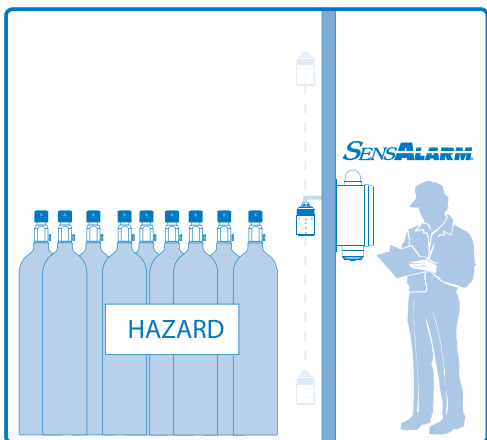
SensAlarm® is the easiest to implement and most reliable single point monitoring system available! Connect power and plug in the SensAlert® sensor and SensAlarm will automatically configure the system for gas type, range, engineering units and default alarm levels.

With active temperature compensation, the sensors are virtually drift-free and provide significantly reduced maintenance. SensAlarm is the best shelter or room monitor for toxic and combustible gasses and Oxygen deficiency hazards.

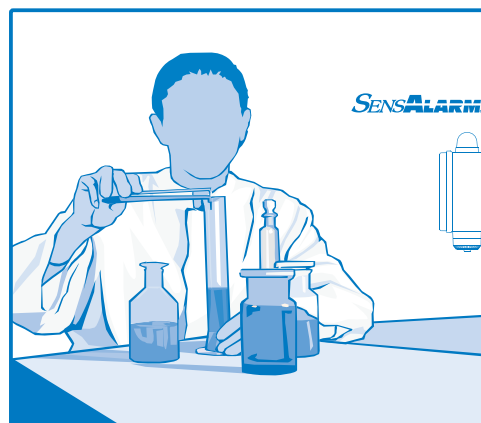
The non-intrusive, menu driven calibration provides fast functional checks (under 2 minutes), and the new calibration data is written into sensor non-volatile memory. This feature also allows for shop calibration and hot-swapping in the field. SensAlarm comes standard with a horn, strobe and three user configurable relays to maximize functionality.



SENSALERT
A member of the SensAlert family.



Gas Room Application - Sensor can be remote mounted at the ceiling, breathing or floor height depending on the gas hazard.



Chemical or Research Lab Application - Sensor mounted to detect Oxygen deficiency at breathing height to protect employees.

SENSALERT®

4-20 mA & Modbus RS-485 Transmitters

- Optional I. S. Installation
- Transportable Calibration
- Automatic Sensor Recognition
- Menu Driven Non-intrusive Interface
- Displays Gas Name, Concentration & Units
- Optional Alarm Relay available with 4-20 mA
- 3 Alarm relays standard with RS-485

The 'original' smart sensor gas monitor, SensAlert® was the first intelligent sensor fixed monitor to be offered on the market. Advanced components and rigorous ergonomic design is combined to provide significantly improved reliability with streamlined maintenance. The menu driven non-intrusive interface provides fast access to all transmitter functions in most hazardous classified environments.

SensAlert transmitters automatically recognize all SensAlert® sensors, displaying the gas name, measuring units and value. Linearization and temperature compensation are performed from data stored in sensor non-volatile memory. This delivers an accurate, drift-free measurement over the widest range of environmental conditions.

SensAlert 2-wire and 3-wire 4-20mA models are offered along with RS 485 (Modbus RTU) communications, three enclosure styles and Intrinsically Safe installation. Accessories, including remote sensor extension, duct mount and sample draw equipment, complete this exceptional product line.



NEMA 4X



Division 2



Division 1